



Serprotech Energy

CORPORATE DOSSIER

FIELD SERVICE, SPECIALIZED PERSONNEL AND SUPPLIES

WHO ARE WE



In 1998 under the name of Estrategia, Servicio y Operación, C.A, **SERPROTECH ENERGY** is born to cover the needs and offer solutions for specialized services in the Latin American market.

We Specialized in Field Services and Specialized Personnel in the area of Power Generation, Oil Supply, Equipment, Tools, Materials and Supplies.

We Service **Oil & Gas, Electric, Industrial and Petrochemical sectors**, contributing in savings on maintenance costs and OPEX budgets for our customers.



OUR LOCATIONS..

USA

MÉXICO

PANAMÁ

COLOMBIA

PERÚ

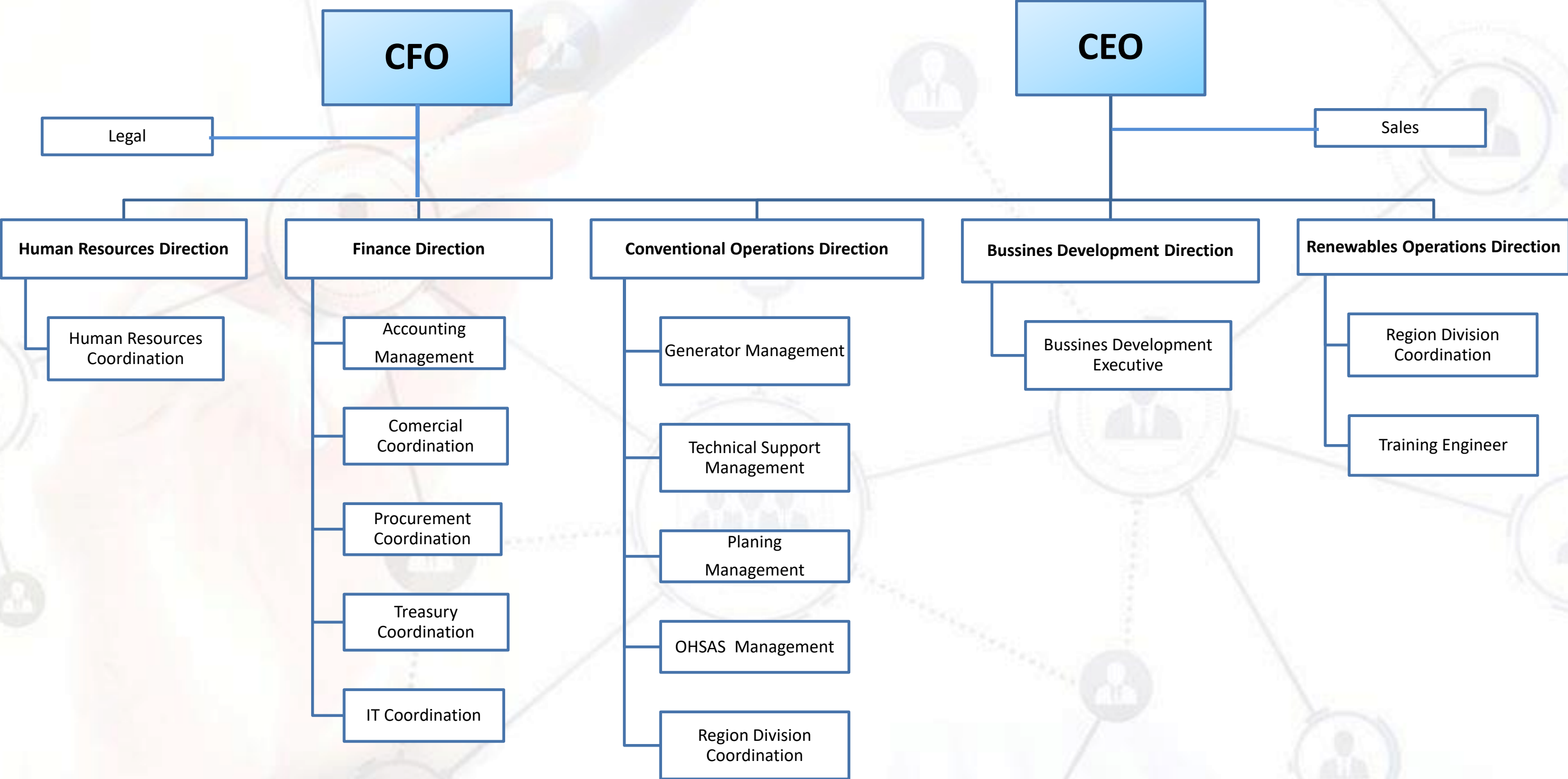
CHILE

ARGENTINA

ESPAÑA



ORGANIZATION CHART



BUSINESS AREAS

CONVENTIONAL ENERGY

- SPECIALIZED PERSONNEL
- FIELD SERVICE

RENEWABLE ENERGY

- SPECIALIZED PERSONNEL
- FIELD SERVICE

SUPPLIES

- TOOLS & EQUIPMENT

CONVENTIONAL ENERGY

SPECIALIZED PERSONNEL FOR:

- Steam and Gas turbines, Generators, Compressors and Control TFA'S.
- Turbines and Generators Specialized Mechanical Technicians.
- Electrical and Instrumentation Specialized Technicians.
- Engineers Specialized in Protection.
- Engineers Specialized in Controls
- Electromechanics Assembly Specialists.
- Power Station Specialists.
- Manpower in General



CONVENTIONAL ENERGY

FIELD SERVICE FOR:

- Electromechanical Assemblies, Inspection, Maintenance, Commissioning and Electric Power Generation Equipment Commissioning.
- Stator Rewinding, Electric Generators Rotor Re-insulation.
- Electrical Power Substations Evaluation, Inspection & Maintenance.
- Industrial Equipment Maintenance and Assembly in Industrial Plants.
- Mechanical, Electrical and Instrumentation Field Services in General.



RENEWABLE ENERGY

SPECIALIZED PERSONNEL

- Certified Specialized Personnel in GWO T1, T2 y T3.
- Certified Specialized Personnel in IRATA L1, L2 y L3.
- Electromechanics Assembly Supervisors, Technical Inspectors (ITO), Assembly Supervisor GWO.
- Risk Preventionists, Documentary Service
- Field Service for Slope Closure and Wind Turbines Preventive / Corrective Maintenance.



RENEWABLE ENERGY

FIELD SERVICES

PREVENTIVE MAINTENANCE

- General Cleaning.
- Failure Verification according to the SCADA system registry.
- Filter change.
- Alignment Verification between multiplier box and Generator.
- Oil Check and fat levels.
- Pressure check in hydraulic oil accumulators.
- Elevator operation verification.
- Verification of internal and external anchor points (Nacelle).

CORRECTIVE MAINTENANCE

- Pumps
- Lubrication system.
- Connections / Hoses.
- Hydraulic System.
- Pressure accumulators.
- Generator.
- Multiplicator box.
- Break system.
- Yaw drive

ANNUAL MAINTENANCE

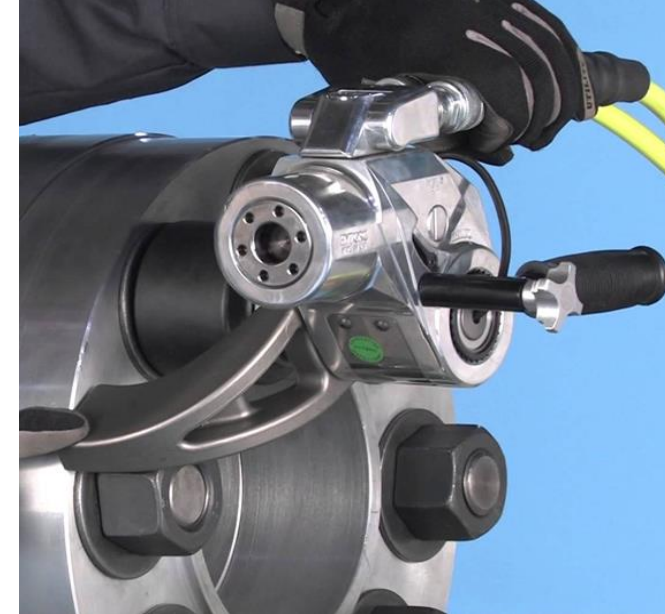
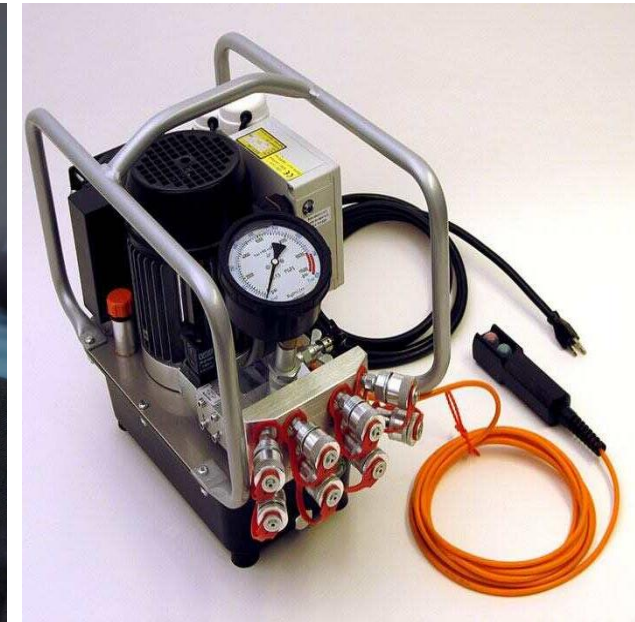


SUPPLY

- Mechanical Hand Tools.
- Hydraulic Equipment, Torque Equipment.
- Lifting equipment.
- Measurement tools.
- EI Equipment, Vibration Measurement Equipment.
- Laser Alignment Equipment.
- Line Failure Simulation Equipment Electrical (CP100).
- Paint Thickness Measurement Equipment
- DRLO Equipment, Low resistance meter
- AVANTI 10 / AVANTI Hydraulic Keys AVANTI 10/AVANTI 3.
- Hi-pot Equipment.
- Hi-pot. Portable Calibration Oven.
- Horiba Equipment to Tunnig and Mapping.
- Insulation Resistance Meter



TOOLS AND EQUIPMENT



QUALITY MANAGEMENT SYSTEM



SERPROTECH ENERGY Serprotech Energy has been granted with the ISO 9001: 2015 Quality Management System certification for Hiring and / or Forecasting Services of qualified Personnel to Execute Inspection, Support, Assembly and Maintenance activities of Energy Transformation Equipment's in Industrial Plants and Wind Parks.

Additionally, with the implementation of an Integrated Management System in Maintenance Services for Energy Transformation Equipment and its Auxiliaries.

SERPROTECH ENERGY SERPROTECH ENERGY ensures compliance with the specifications of the services, legal requirements and others; with reliably service to all customers, suppliers and interested parties during the execution of the job being always oriented towards continuous improvement.

CUSTOMERS



CONTACT US..



Serprotech Energy



ARGENTINA - SERPROTECH ENERGY S.A.

CUIT 30-71550305-7 • Alem. Leandro N Av. 619 Piso 3. 1001-Ciudad Autónoma BsAs. ☎+54 911 2781 1037

COLOMBIA - SERPROTECH ENERGY S.A.S.

NIT 900.909.411-1 • Bogotá D.C. 001, Av. 9 100 07 OF 409. ☎+57 312 387 0493 / 813 2865

CHILE - SERPROTECH ENERGY SPA.

RUT 76570098-1 • OFIC Av. Kennedy Lateral No. 6800 Torre B Oficina 718 Vitacura, Santiago. ☎+56 223 284800

MEXICO - PERSONAL ESPECIALIZADO Y TECNOLOGIA EN ENERGIA S DE RL DE CV.

RFC PET-140902-M2A • Av. Ignacio Zaragoza 712A Dep. 5, Colonia centro, Coatzacoalcos, Veracruz. CP. 96400. ☎+52 9211517129

PANAMA - SERPROTECH ENERGY INC.

RUC 2531947-1-82357 D.V. 40 • Calle 50 y Calle Sto. Domingo P.H. Torre Global, Piso 12, Ofic. 12-06 P.O. Box 0832-01523

PERU - SERPROYTEC S.A.C.

RUC: 20557942786 • Av. República de Panamá Nro 3418 INT. 301 URB. Limatambo, San Isidro. ☎+51 986 983794.

ESPAÑA - SERPROTECH ENERGY GROUP.

NIF-B87550810 • CLL Isabel la Católica 51,2. Valencia. CP46005.

ESTADOS UNIDOS - SERPROTECH ENERGY LLC.

ID 83-2084718 • 11555 Heron Bay Blvd. Suite 200, Coral Springs ,FL . 33076
☎ +1 215 9202568



contacto@serprotechenergy.com